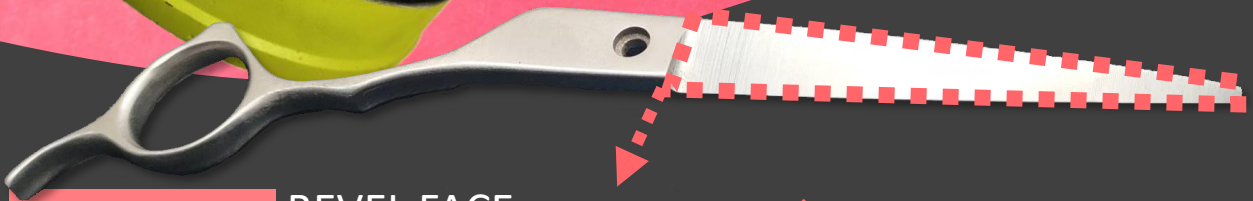


Hair scissors grinding wheels



1. CBN BEW

BEVEL FACE

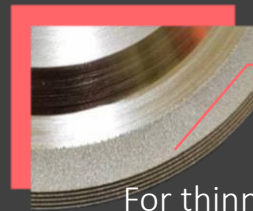
More efficient than OM magnesium oxide wheel

50% ↑

Wheel spec.	CBN BEW2S
Wheel size	355 X 25/40 X 20 X 276.3
Machine	SHUN TIEN
Wheel speed	28 m/s
Feet rate	1.5 mm
Work material	SUS440C
Hardness	HRC 61 (other spec for HRC<60)

Result

1. High efficiency
2. Low grinding noise
3. Lower dressing frequency
4. Good retention and long life time



2. CBN electroplated

For thinning scissors forming



3. CBS polishing

For edge polishing
GC2000 CBS



Carbo Tzujan Industrial Co., Ltd.

239 No.1 Fu An street, Yingge Dist, New Taipei City, Taiwan

TEL : +886226793461 FAX : +886226794561

webmaster@carbo.com.tw

