

Anchor[®]

深化技術
先端應用

Fine Tech
New Apps



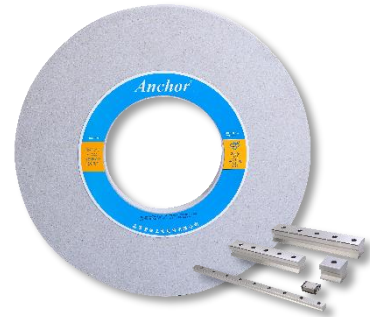
DIAMOND CBN & BONDED GRINDING WHEEL CATALOGUE

Bonded Wheel



General Purpose Grinding Wheel

These wheels are generally used on Bench and Floor stand Grinders for a wide range of off-hand grinding applications.



Wheels for Linear Guide Way ind.

1. Well Suit for various brands of machine
2. Complete series of product for both linear guide way and slider grinding, include surface grinding and trench forming.



Centerless Grinding Wheel

Centerless grinding is the most versatile method of reproducing a cylindrical form on various work-piece, in both through-feed and plunge grinding.



Cylindrical Grinding Wheel

Cylindrical grinding wheels are used to grind the periphery of rigidly supported and rotating work-piece.



Roll Grinding Wheel

Available in vitrified bonds for fast cutting rates and resin bonds for high finish working result. Normally applied in steel industry, papermaking plants and automobile axles.



Surface Grinding Wheel

Widely applied for various brands of surface grinding machine and provide complete specification and size to satisfy customers' requirement on efficiency and cost.



Single product brochure



Standing Inventory, scan QR code on the back cover.





Double Disc Grinding Wheel

Used in pairs grind both sides of the work-piece simultaneously thus ensuring flatness and correct dimensional tolerances. Work-pieces include piston rings and springs, etc.

DM



Gear Grinding Wheel

Anchor provides Single-Rib wheel (straight wheel for profile grinding) and Multi-Rib wheel (worm wheel, small module gear grinding) with excellent form holding ability for gear industry.

DM



CBS Polishing Wheel

With elastics and absorbability which is suit for mirror finished polishing operation of various kinds of grinding machine. Applied in aluminum alloy polishing, mold working and IC substrate heterogeneous surface polishing.



Snagging Wheel for Foundries

Snagging is a rough grinding application to remove unwanted metal in the foundries, engineering, automobile and shipbuilding industries.

DM



CX Grinding Wheel (Sol Gel abrasive)

The unique microstructure of abrasive grains which with better characteristics of self-sharpening and tough, suitable for grinding hard-to-grind material such as, ASP, SKD11, SKH and so on.



Knife Grinding Wheel

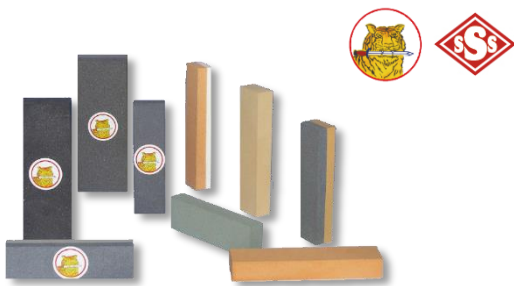
Knife bond grinding wheels are able to absorb grinding heat to avoid deforming the profile of work-piece. Usually applied in utility knives, scissors and cooking knives, etc.





Mounted Wheel

Used on high-speed electric or pneumatic portable machines in foundries and tool room applications. Shank diameter 3 and 6mm, with A, 38A, WA, RA, C, GC abrasive.



Sharpening Stone

Available in both oil-filled and non oil-filled, sharpening stones are used to produce fine edges on all types of tools including knives, blades and cutting tools, etc.



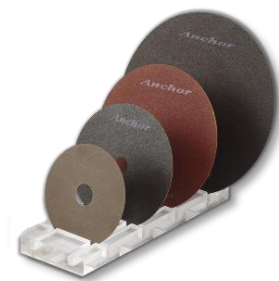
Reinforced Resin Cut-off Wheel

Designed for safe (with fiberglass net) and efficient cutting of steel, castings and general engineering applications.



Steel Saw Grinding Wheel

The wheel is available in range of 1.0mm – 4.5mm in thickness which used to grind the teeth in small-toothed steel saws. The wheel provides uniform thickness and long life time.



Super Thin Resin Cutting Wheel

Accurate and regular cutting effect that well suited for various kinds of mold parts cutting, metallographic cutting and resistance carving. (Thickness $\geq 0.5\text{mm}$, tolerance $< 0.1\text{mm}$)



Reinforced Depressed Centre

With multi-layered fiberglass reinforcement for safe operation, and designed in a range of sizes to suit various brands of electric and pneumatic portable angle grinders.



Diamond & CBN Wheel



Surface Grinding Wheel

Innovative BSD and BSW series resin bonded products are developed to achieve both cost effective and satisfied working result on dry and wet application.

DM



Centerless Grinding Wheel

These wheels are used to mass producing rods and bars made of ceramic, tungsten carbide, high speed steel and sapphire etc. Regular size : 12", 14", 16", 18", 20", 24".

DM



Wheels for Metal Cutting Tool

Complete series of specification in metal (MMW), polyimide (HBMW) and resin (BMW) bond. Well suit for various brands of grinding machine, applied in flute, gash, OD/relief processes.



Cylindrical Grinding Wheel

Cylindrical grinding wheels are suitable for producing rollers or screws with or without thermal spray or special coating. (Wheel diameter : 300mm - 760mm)

DM



Internal Grinding Wheel

Vitrified and resin bonded internal grinding wheels are the best candidate for molds, bearing cases, auto parts internal grinding and linear sliders form grinding and so on.



Wheels for PCB Microdrills

Designed to provide both good forming and cutting ability to delicate microdrills mass production. Complete series for pinch peel grinding : NP5, NP4, P4, RPG, RCG.

DM



Wheels for Woodworking Ind.

Available for grinding and re-grinding wood working tools, such as circular saw, routers and so on.

DM



Precision Cutting Wheel

Diamond precision cutting wheel is able to cut or groove precisely non-ferrous material, such as tungsten carbide, ceramic and quartz. CBN could be used to cut ferrous materials.

DM



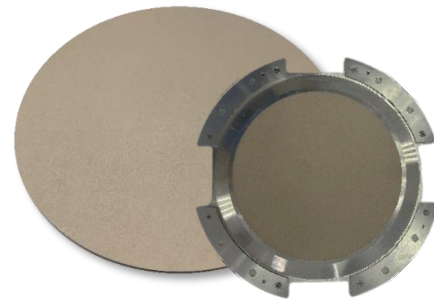
Wheels for PCD, PCBN Grinding

Vitrified bond wheels are durable to heavy loading production of the precision PCD and PCBN tools. Complete series for regrinding, edge and peripheral grinding.



Electroplated Grinding Wheel

Electroplated wheels have featured of high abrasives protrusion leading to high removal rate to match customers' needs for efficiency and complicate profiling.



Ceramic vacuum chuck

Use the hole permeability of the ceramic vacuum chuck to fix the workpiece for cleaning, cutting, and grinding, screen printing and other processing processes.



DM



Camshafts V-CBN Grinding Wheel

Vitrified bond CBN camshaft grinding wheels lower the possibility of thermal damage and increase the reliability and consistency for massive camshafts productions.



DM



Beveling Wheel for LCD Glass

Metal bond beveling wheels, featuring long life time and form witholding ability, make themselves the best candidate for beveling glass substrates of LCD panels.



Hand Saw Grinding Wheel

The metal bonded wheels have excellent profiling and cutting ability to achieve high throughput and lower grinding cost. (Wheel angle is customized)



DM



Hard Brazing Wheel

HB depressed centre and cut-off are widely used in foundry, shipbuilding and steel industries. It's the most optimal design of safety, efficiency and environmental friendly.



CVD Roller Dresser

Used to dress various shape and high precision grinding wheel, applied in precision components grinding processes such as gear, linear guide way, ball screw and bearing, etc.

Dressing tools & Machine

DM



Diamond Dresser

Complete product lines for various single-point, forming, multi-point, impregnated and CVD dressers.

DM



AN Series Balance Machine

Grinding wheel balancing
Single / Dual / Three planes balancing utilities
Vibration spectrum analyzer utilities
Guide interface, easy to use, IP65 waterproof



About Anchor

A new LED sign board of 「Anchor」 was just set up nearby the front door, it seems symbolizes a completely new stage to the company. Carbo Tzujan Industrial Co., Ltd. as the first pioneer abrasive manufacturer in Taiwan was founded in 1946. It was also the first company that able to produce diamond, CBN and bonded wheels simultaneously.

Vision *Partner for ultimate success*

Mission Progress / Product, Process, R&D
Contribution / Industry community
Responsibility / Customer, Employee, Shareholder

Policy Speed, Service, Professional and Innovation

Scan to view



Standing Inventory Order Sheet



Single Product Brochure PDF

- Taiwan Head Office & Factory -

Carbo Tzujan Industrial Co., Ltd. Tel : 886-2-26793461 #132 Fax : 886-2-86771742
No.1 Fu An St. Ying Ko District, New Taipei City, Taiwan.
webmaster@carbo.com.tw

- China Branch -

Shenzhen Branch Tel : 86-755-8285-3975 Fax : 86-755-8285-3984
start@carbo.com.tw

- Thailand Plant -

THAIGIA CO., LTD. Tel : 66-36-733877-80 Fax : 66-36-733881-82
No. 26 Moo 3, Suwannasorn Rd., Khoktum, Nongkhae, Saraburi, Thailand 18250
alger@carbo.com.tw



MIRDC

ISO 9001 ISO 45001 ISO 14001
3XBY003 315S001 315E001



carbo.com.tw



MIT



TD040003